

CITY OF MURRAY CONTROL MONUMENT CARD

DESIGNATION: BM A2

TYPE: CONCRETE MONUMENT W/ CITY DISK

DATE SET: JUNE 2002 QUAD: DEXTER, KY.

HORIZONTAL DATUM: NAD-83 VERTICAL DATUM: NAVD-88

STATE: KENTUCKY COUNTY: CALLOWAY ZONE: KY. S 1602

NORTHING: 1767839.51 FT

EASTING: 874745.20 FT

ELEVATION: 548.90 FT (GPS)

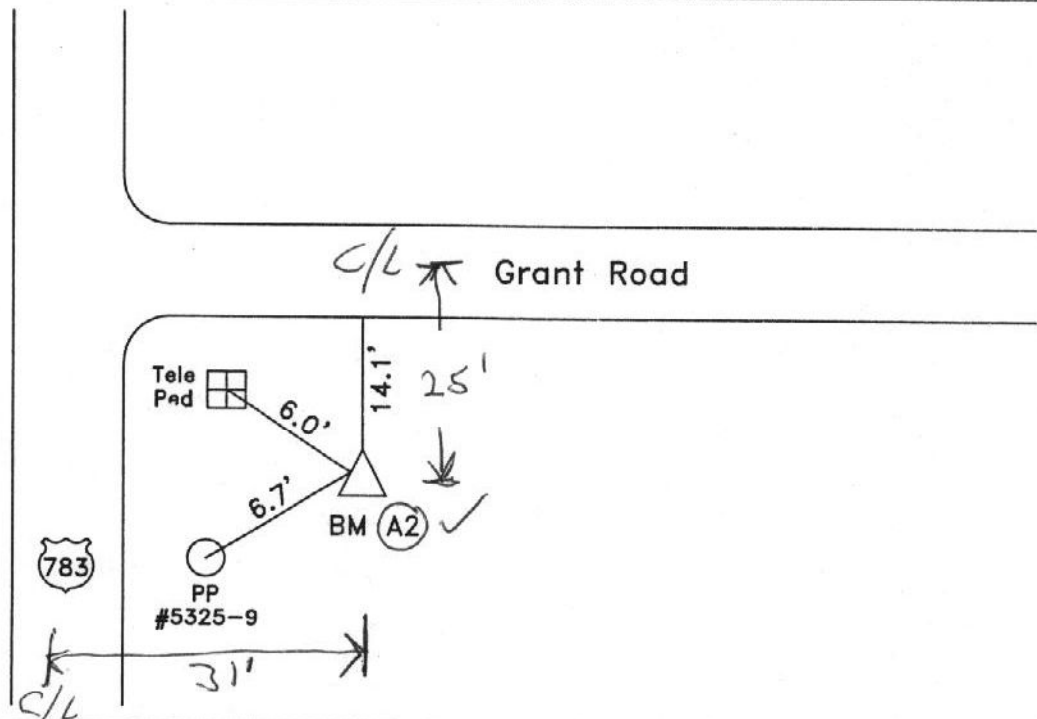
LATITUDE: N 36°39'15.32480" LONGITUDE: W 088°21'37.41539"

SCALE:

CONVERGENCE:

PLANE AZI. TO AZI. MARK:

To Reach: Located at the intersection of State Route 783 and Grant Road.



NOT TO SCALE

GRW

PICS
N5WE
1-2-3-4

GRW Aerial Surveys, Inc.
801 Corporate Dr. Lexington Ky. 40503
(859)223-3999